

TRAMIGO

TRACKING & CONNECTIVITY



COMPLETE SOLUTION

TRAMIGO OBD STANDARD

PLUG & PLAY FOR BASIC TRACKING

Ready to use in seconds! Tramigo plug & play OBD Standard is the best tracking solution for any vehicle with OBD II port. No installation is required and comes with an embedded SIM that works in 2G networks. Includes access to TramigoCloud and TramigoApp for real-time tracking and more.



TRAMIGO OBD STANDARD FEATURES



GEOFENCING

Define a geographical zone to track if your vehicles are leaving or entering that zone



START/STOP REPORT



TRIP HISTORY

Keep track of the vehicle's route, distance, and date and time of trips



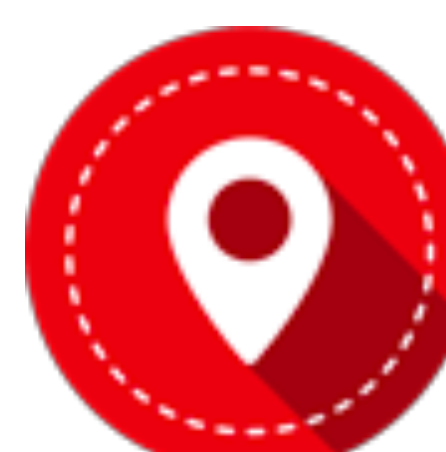
IGNITION-ON ALERT

Get notified when the vehicle ignition is turned on or off



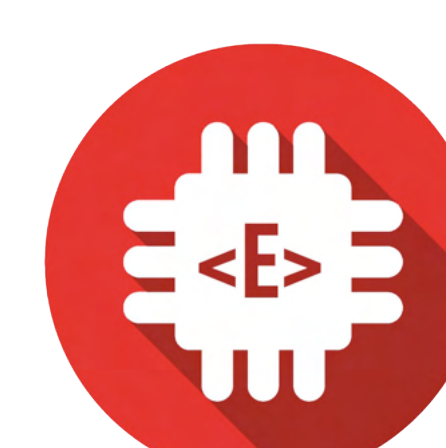
SPEED ALARM

Set speed limits and receive notifications when drivers exceed limits



LIVE TRACKING

Real-time view providing the vehicle's exact position



eSIM INCLUDED

Tramigo's embedded multi-network connectivity



BUILT-IN BATTERY

To enable tracking in case of tampering

TRAMIGO SOFTWARE

Tramigo offers software solutions which allows you to monitor your vehicles at your control center or from your mobile devices:

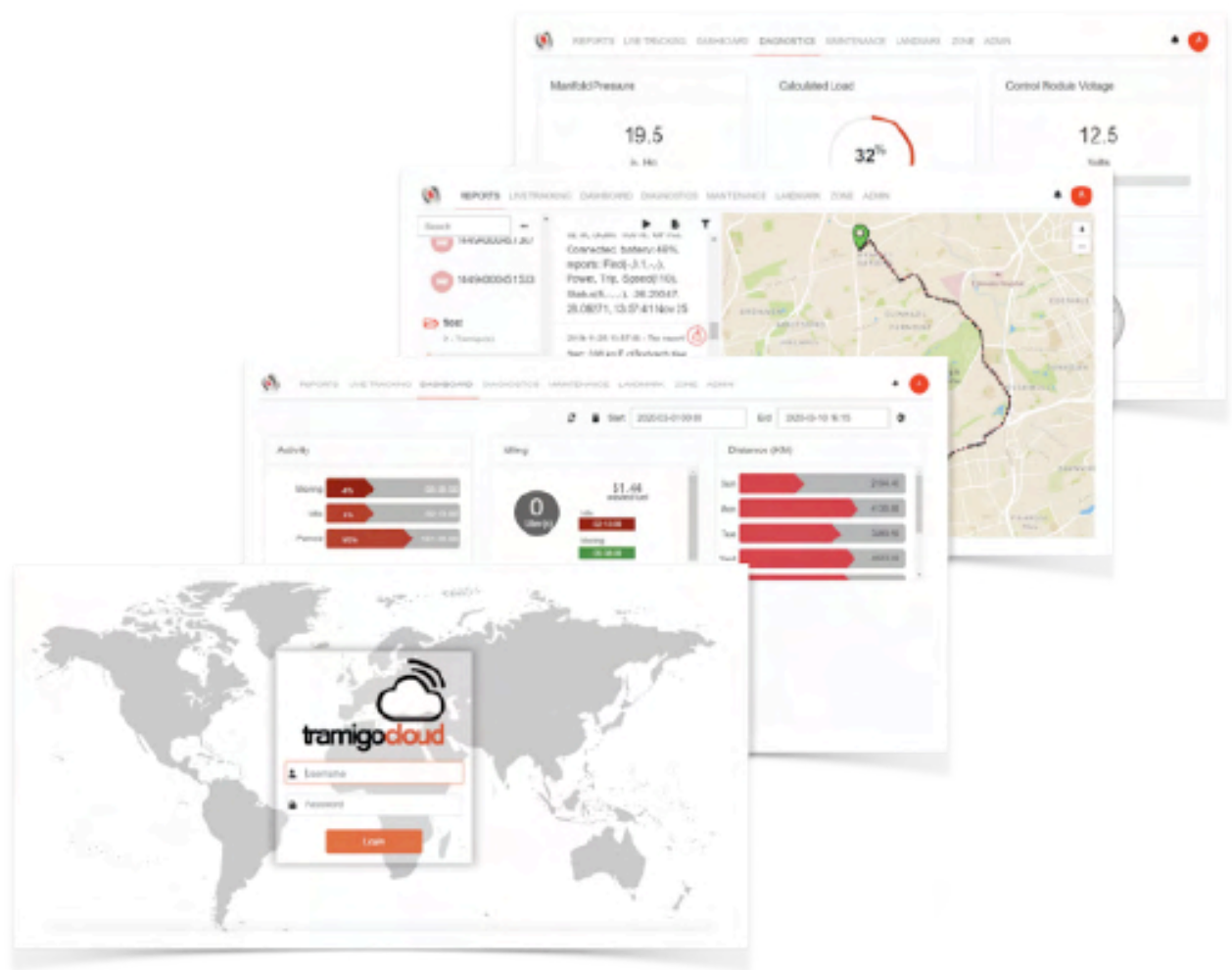
- **TRAMIGO**CLOUD

TramigoCloud allows you to track your fleet behind a secure web login and puts a full control center within your reach wherever you go. With centralised updates the latest features are always immediately available to all of our security focused customers. TramigoCloud is recommended for fleet management.



- **TRAMIGO**APP

TramigoApp is an easy but secure way to track and monitor your vehicles anytime and anywhere. TramigoApp allows you to monitor and track your vehicles, staff, or family directly on your phone. Additional features includes trip reports, usage history reporting, geofence and setting alarms. Available for free on App Store and Google Play.



TRAMIGO OBD STANDARD TECHNICAL DATA

Size	50 mm x 38 mm x 25 mm
OBD Port	Support 16 pin standard OBDII port
Network	GSM/GPRS
Frequency	850/900/1800/1900 MHz
GPS chipset	MTK high sensitivity chip
GPS channel	66
Tracking sensitivity	-165dBm
Location accuracy	<10 meters CEP
Working voltage	9-36VDC

Time To First Fix (open sky)	Cold status <35s Hot status <1s
GPRS Protocol	Class12, TCP/IP
Operating temp.	-20°C to +70°C
Standby & Working consumption	5mA~50mA
GSM / GPS antenna	Built-in
Ignition status detection	Support
Memory Capacity	1400 positions